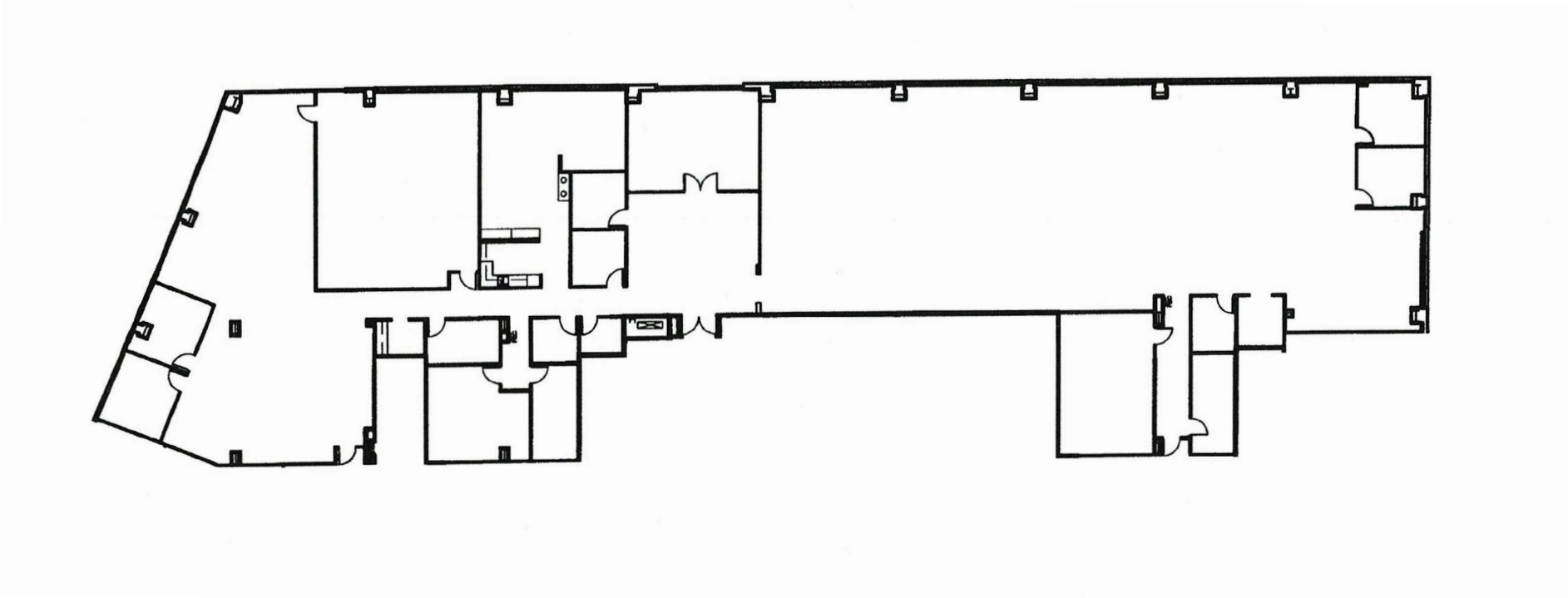


FLOOR PLAN | 4160 TEMESCAL CANYON RD

SUITE 401 | ±14,240 SF



Thomas P. Pierik, SIOR, 951.276.3610, DRE 00982027 | David Mudge, SIOR, 951.276.3611, DRE 01070762 | Andrew Peake, 951.276.3644, DRE 01398894

No warranty or representation has been made to the accuracy of the foregoing information. Terms of sale or lease and availability are subject to change or withdrawal without notice. Lee & Associates Commercial Real Estate Services, Inc. - Riverside. 3240 Mission Inn Ave, Riverside, CA 92507 | Corp. DRE#: 01048055

LAKESHORE PLAZA
at Dos Lagos

4140 & 4160 TEMESCAL CANYON ROAD, CORONA, CA