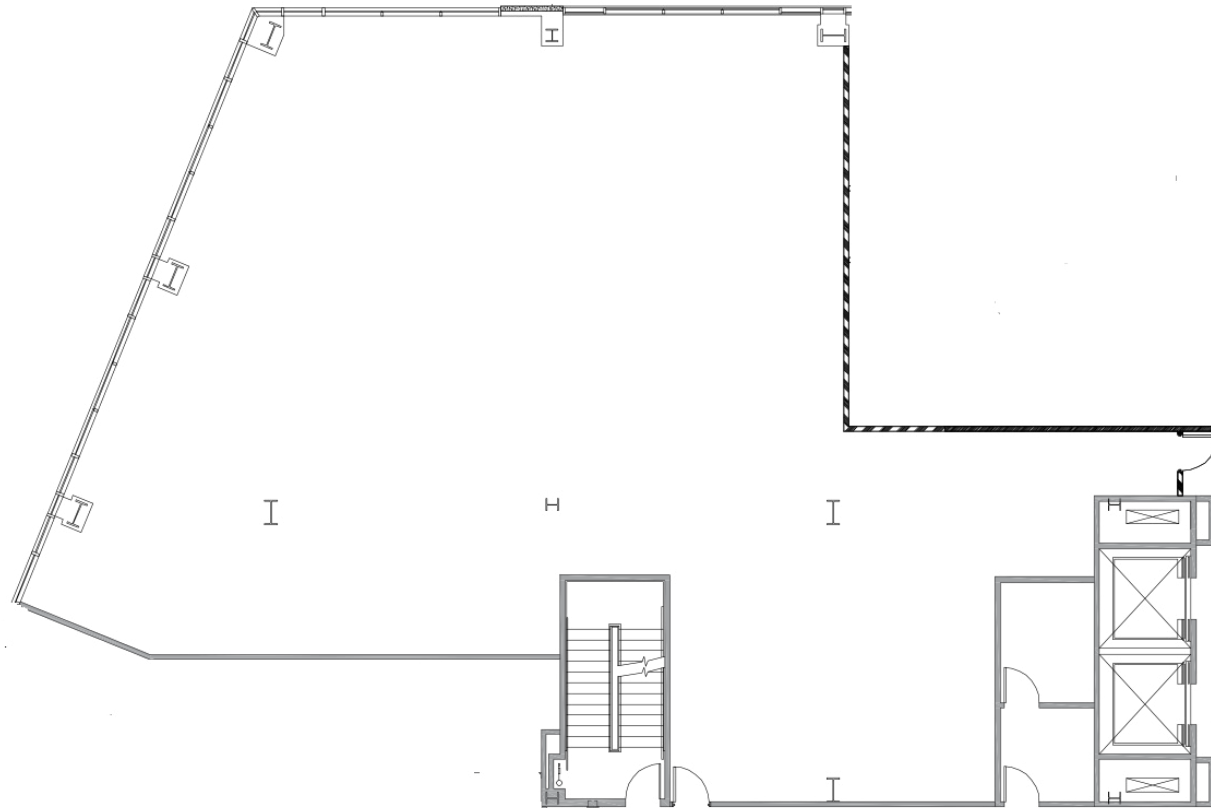


**FLOOR PLAN | 4160 TEMESCAL CANYON RD**

**SUITE 301 | ±4,771 SF**



**Thomas P. Pierik, SIOR, 951.276.3610, DRE 00982027 | David Mudge, SIOR, 951.276.3611, DRE 01070762 | Andrew Peake, 951.276.3644, DRE 01398894**

*No warranty or representation has been made to the accuracy of the foregoing information. Terms of sale or lease and availability are subject to change or withdrawal without notice. Lee & Associates Commercial Real Estate Services, Inc. - Riverside. 3240 Mission Inn Ave, Riverside, CA 92507 | Corp. DRE#: 01048055*

**LAKESHORE PLAZA**  
**at Dos Lagos**

**4140 & 4160 TEMESCAL CANYON ROAD, CORONA, CA**